



## Attention Residents and Businesses

### Event Notification - Sunday, August 20, 2017

On **Sunday, August 20, 2017** some of the streets in your neighbourhood are going to be affected by up to 1,500 cyclists participating in the seventh annual **Ryder Hesjedal's Tour de Victoria**. Cyclists from all over Canada and the U.S. are coming for the largest one-day cycling event in Victoria **and it's happening in your community!**

#### What will happen on Sunday, August 20th?

- Police, traffic control personnel & volunteer marshals will control cyclists and traffic flow along the route
- The ride starts in downtown Victoria at 7:00am, travels 140km around the region & ends downtown at 3:30pm
- The route only affects certain roads in each municipality and timing varies in each area
- Expect minor traffic delays throughout the region
- More details provided below or visit [www.tourdevictoria.com/traffic](http://www.tourdevictoria.com/traffic) for detailed info about areas near you

Inquiries can be made to [info@tourdevictoria.com](mailto:info@tourdevictoria.com) or 778-350-6325

#### Volunteers needed in your community!

Ride marshaling could be as easy as stepping out your front door.

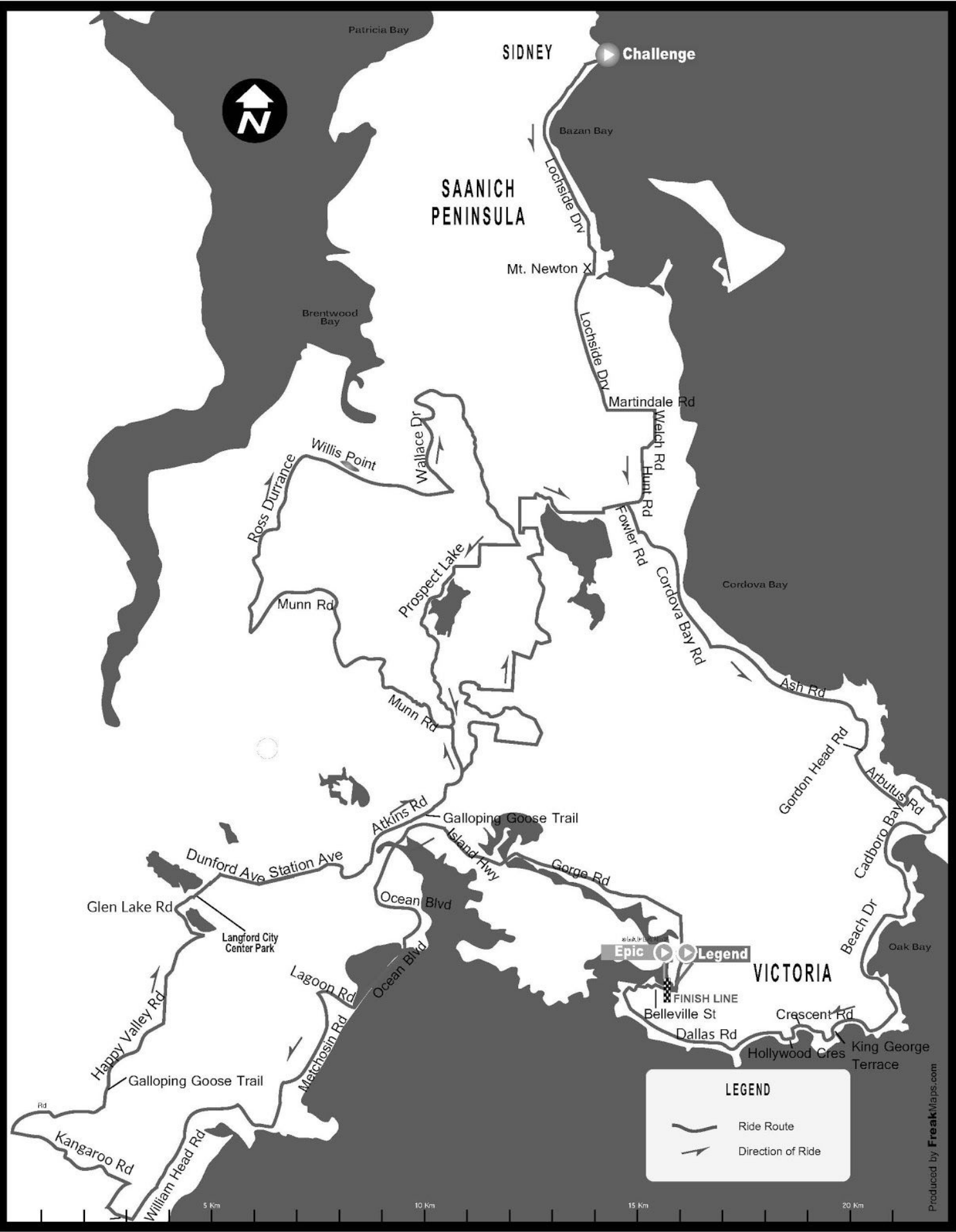
Volunteer online at [www.tourdevictoria.com/volunteers](http://www.tourdevictoria.com/volunteers) or email [volunteers@tourdevictoria.com](mailto:volunteers@tourdevictoria.com)

#### Join the ride!

The ride has three distances and welcomes all types of riders.

Registration is available online at [www.tourdevictoria.com/register](http://www.tourdevictoria.com/register)

Municipality	Time	Traffic Information
<b>Victoria</b> - (Belleville St, Government St, Gorge Rd E)	6:50am – 7:10am & 8:20am – 8:40am	Vehicle traffic permitted the opposite direction of our cyclists.
<b>Saanich</b> - (Gorge Rd W)	7:00am – 7:20am & 8:35am – 8:55am	
<b>View Royal</b> - (Island Hwy, Old Island Hwy)	7:10am – 7:30am & 8:40am – 9:00am	
<b>Colwood</b> - (Ocean Blvd, Lagoon Rd, Metchosin Rd)	7:20am – 8:10am	
<b>Metchosin</b> - (Metchosin, Duke, William Head, Lombard, Rocky Point, Liberty, Kangaroo, Lindholm, Happy Valley)	7:30am – 9:00am	
<b>Langford</b> - (Happy Valley Rd, Glen Lake Rd, Leigh Rd, Dunford Av, Station Ave, Atkins Ave)	8:00am – 9:25am	
<b>View Royal</b> - (Atkins Ave, Burnside Rd W)	8:15am – 9:35am	
<b>Saanich</b> - (Burnside Rd W, Prospect Lake Rd, Munn Rd)	8:25am – 12:30pm	
<b>Highlands</b> - (Munn Rd, Willis Point Rd)	8:35am – 11:00am	
<b>Highlands</b> - (Millstream Lake Rd, Ross Durrance Rd)	8:35am – 11:00am	
<b>Saanich</b> - (Willis Point Rd, Wallace Dr)	9:00am – 11:15am	Vehicle traffic permitted the opposite direction of our cyclists. (Two-way traffic allowed on certain roads. See website for details)
<b>Central Saanich</b> - (Wallace Dr, Garden Gate, Benvenuto, West Saanich, Old W. Saanich)	9:05am – 11:45am	
<b>Sidney &amp; North Saanich</b> - (1st Ave, Ocean Ave, 5 <sup>th</sup> Ave and Lochside Drive)	10:00am – 10:20am	
<b>Saanich</b> - (See website for detailed route map)	9:15am – 2:20pm	
<b>Oak Bay</b> - (Beach Drive, King George Terrace)	10:15am – 2:50pm	Full Closures (Residents permitted to access their homes when there are breaks in the cyclists).
<b>Victoria</b> - (Crescent Rd, Hollywood Cres, Dallas Rd and waterfront perimeter of James Bay including: Erie St, St Lawrence, Kingston St, Montreal St, Quebec St, Pendray St, Belleville)	10:30am – 3:15pm	
<b>Victoria Inner Harbour</b> - (Belleville St between Menzies St and Government St)	5:00am – 6:00pm	Full Closures



**SAANICH PENINSULA**

SIDNEY **Challenge**

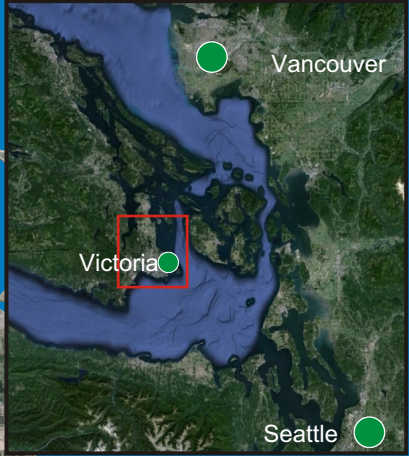
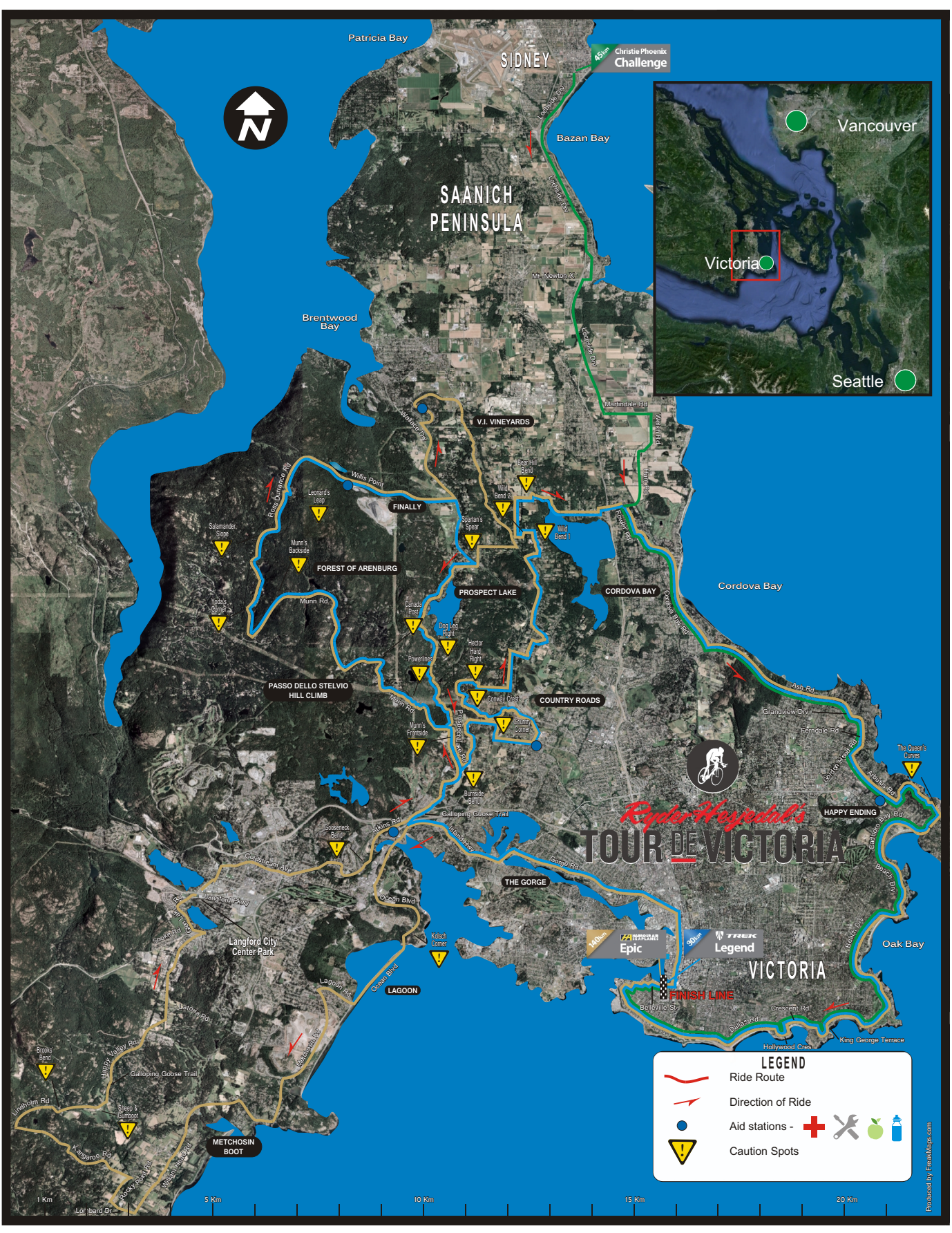
**VICTORIA**

**Epic** **Legend**

**LEGEND**

-  Ride Route
-  Direction of Ride





*Ryder Hayes and the*  
**TOUR DE VICTORIA**

**LEGEND**

- Ride Route
- Direction of Ride
- Aid stations -
- Caution Spots

1 Km 5 Km 10 Km 15 Km 20 Km